



## Hypothermia

### Question 1

An 84 year old lady is brought in ambulance. She was found on the floor of her bedroom after apparently spending 2 days there.

She is confused and drowsy. BP 100/65, HR56, RR16, temperature 31.3. Her left arm and left chest wall are covered in pressure sores,

How would you manage this lady?

What tests would you perform?

How would you warm her up?

Her CK is 113,000. What does this indicate?

What complications may occur?

How is this treated?

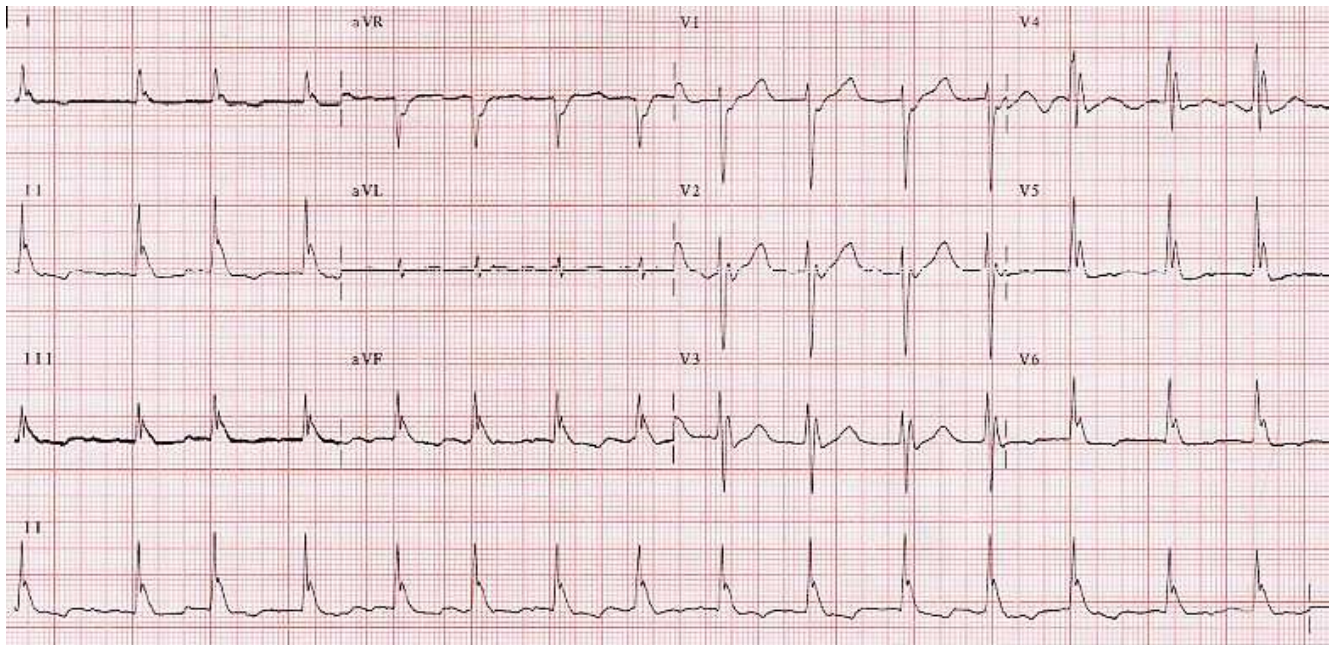
<https://www.clinicalkey.com/topics/emergency-medicine/hypothermia.html>

<http://lifeinthefastlane.com/education/ccc/hypothermia/>

<http://emcrit.org/hypothermia/>

## Question 2

Describe the ECG below



## Question 3.

Discuss the methods for induction of Therapeutic hypothermia

- List methods, pros and cons

[http://www.resus.org.au/policy/guidelines/section\\_11/therapeutic\\_hypothermia.htm](http://www.resus.org.au/policy/guidelines/section_11/therapeutic_hypothermia.htm)

<http://lifeinthefastlane.com/education/ccp/therapeutic-hypothermia-induction-methods/>

<http://www.thennt.com/nnt/hypothermia-for-neuroprotection-after-cardiac-arrest/>