

**AUSTRALASIAN COLLEGE FOR EMERGENCY MEDICINE
FELLOWSHIP EXAMINATION
10 AUGUST 2011 - PART C**

Question 7

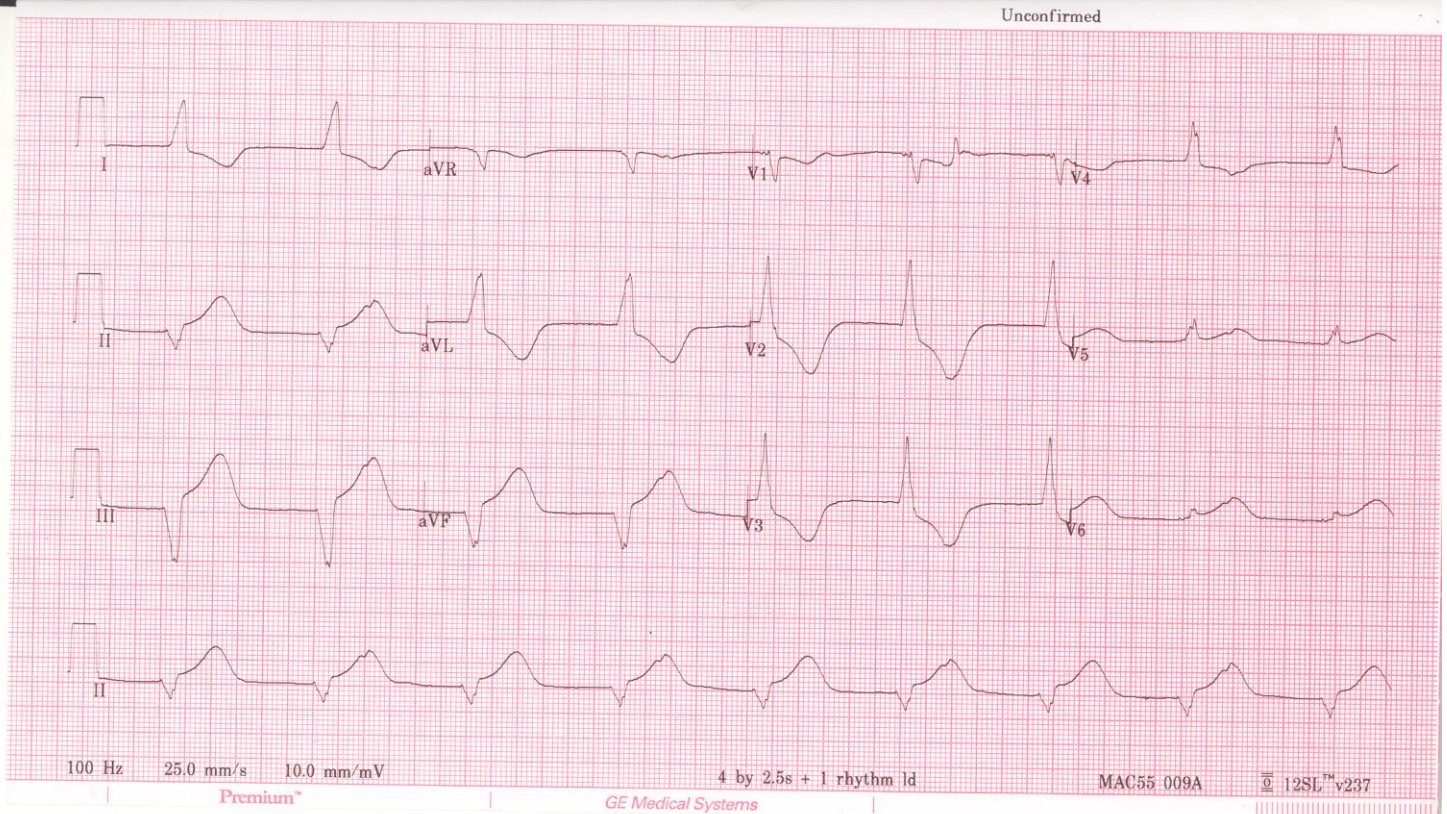
A 54 year old man presents to your rural emergency department with chest pain. An initial ECG reveals an inferior STEMI. Fifteen minutes after receiving intravenous thrombolysis the following ECG is taken.

His observations are:

| | | | |
|---------------------------|--------|----------------|-------------|
| BP | 150/80 | mmHg | |
| Temperature | 36 | ⁰ C | |
| O ₂ Saturation | 98 | % | on room air |

- a. Describe and interpret his ECG (100%)

Unconfirmed



**AUSTRALASIAN COLLEGE FOR EMERGENCY MEDICINE
FELLOWSHIP EXAMINATION
10 AUGUST 2011 - PART C**

Question 8

A 25 year old man presents to the emergency department with a three day history of spreading rash and painful oral lesions. He has the following observations:

| | | | |
|---------------------------|--------|------|--------------|
| HR | 90 | /min | |
| BP | 110/60 | mmHg | |
| RR | 15 | /min | |
| O ₂ Saturation | 97 | % | on room air. |

- a. Describe and interpret his photographs (100%)

*** Note there are two images**

**AUSTRALASIAN COLLEGE FOR EMERGENCY MEDICINE
FELLOWSHIP EXAMINATION
10 AUGUST 2011 - PART C**

Question 8. Photos

See over page for props

**Photo 1 & Photo 2
On next page**

Question 8 Photo 1



Question 8 Photo 2

