

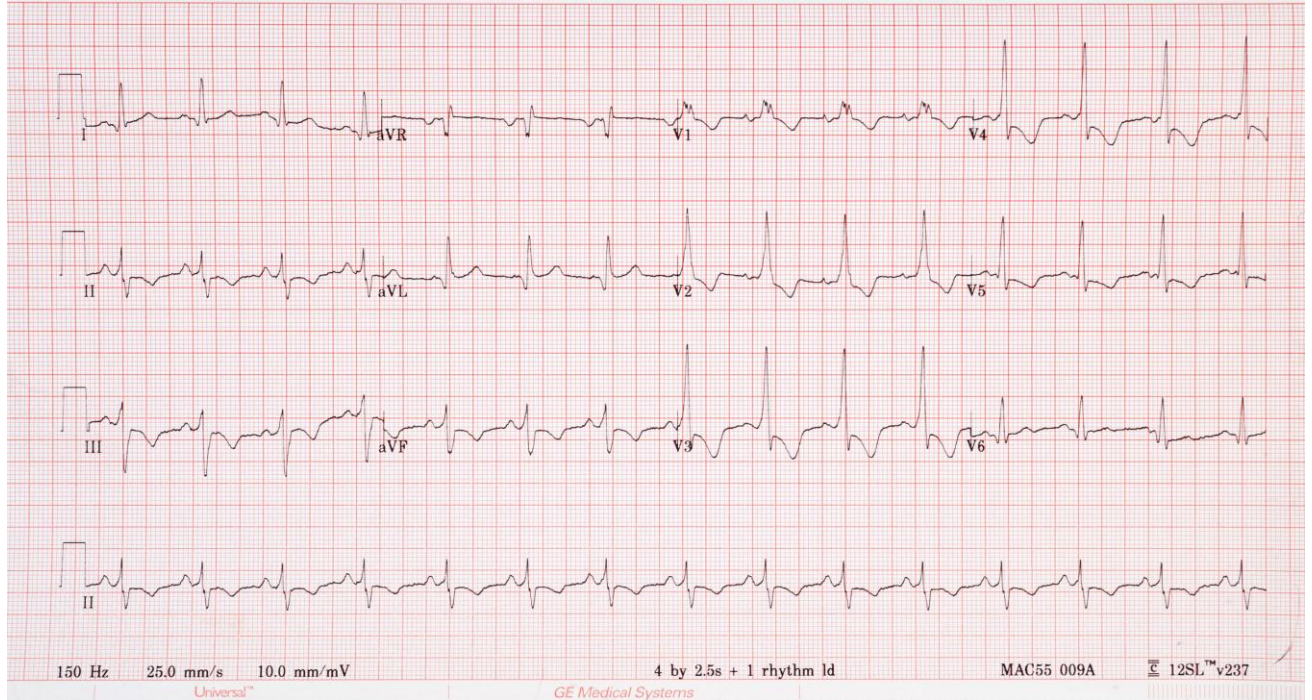
**AUSTRALASIAN COLLEGE FOR EMERGENCY MEDICINE
FELLOWSHIP EXAMINATION
10 AUGUST 2011 - PART C**

Question 4

A 50 year old man presents following an episode of palpitations and syncope.
At the time of the ECG shown he is asymptomatic.

- a. Describe and interpret his ECG (100%)

Question 4 ECG



**AUSTRALASIAN COLLEGE FOR EMERGENCY MEDICINE
FELLOWSHIP EXAMINATION
10 AUGUST 2011 - PART C**

Question 5

A 23 year old man has been brought to your emergency department after a fall onto his outstretched right hand from a height of three metres.

- a. Describe and interpret his X-rays (100%)

**AUSTRALASIAN COLLEGE FOR EMERGENCY MEDICINE
FELLOWSHIP EXAMINATION
10 AUGUST 2011 - PART C**

Question 5. X-rays

See over page for props

**X-ray 1 & X-ray 2
On next page**

Question 5 X-ray 1



Question 5 X-ray 2



**AUSTRALASIAN COLLEGE FOR EMERGENCY MEDICINE
FELLOWSHIP EXAMINATION
10 AUGUST 2011 - PART C**

Question 6

A 30 year old man undergoes a lumbar puncture in the emergency department for investigation of fever, headache and vomiting.

- a. Describe and interpret his results (50%)
- b. Outline the further investigations you would consider in order to identify the cause of these findings (50%)

**AUSTRALASIAN COLLEGE FOR EMERGENCY MEDICINE
FELLOWSHIP EXAMINATION
10 AUGUST 2011 - PART C**

Question 6

His cerebrospinal fluid and serum glucose results are as follows:

| | | | Reference Range |
|------------------|-------------------|-----------------------------------|-----------------|
| Opening pressure | 220 | mm H ₂ O (supine) | (50-200) |
| Colour: | mildly turbid | | |
| WCC | 400 | /ml (predominance of lymphocytes) | (0-2) |
| RBC | 10 | /ml | (0) |
| Protein: | 1.2 | g/L | (0.2-0.5) |
| CSF glucose | 2.2 | mmol/L | |
| Gram stain | No organisms seen | | |
| Serum glucose | 6.2 | mmol/L | (3.0-8.0) |