

**AUSTRALASIAN COLLEGE FOR EMERGENCY MEDICINE  
FELLOWSHIP EXAMINATION  
16 FEBRUARY 2011 - PART C**

**Question 7**

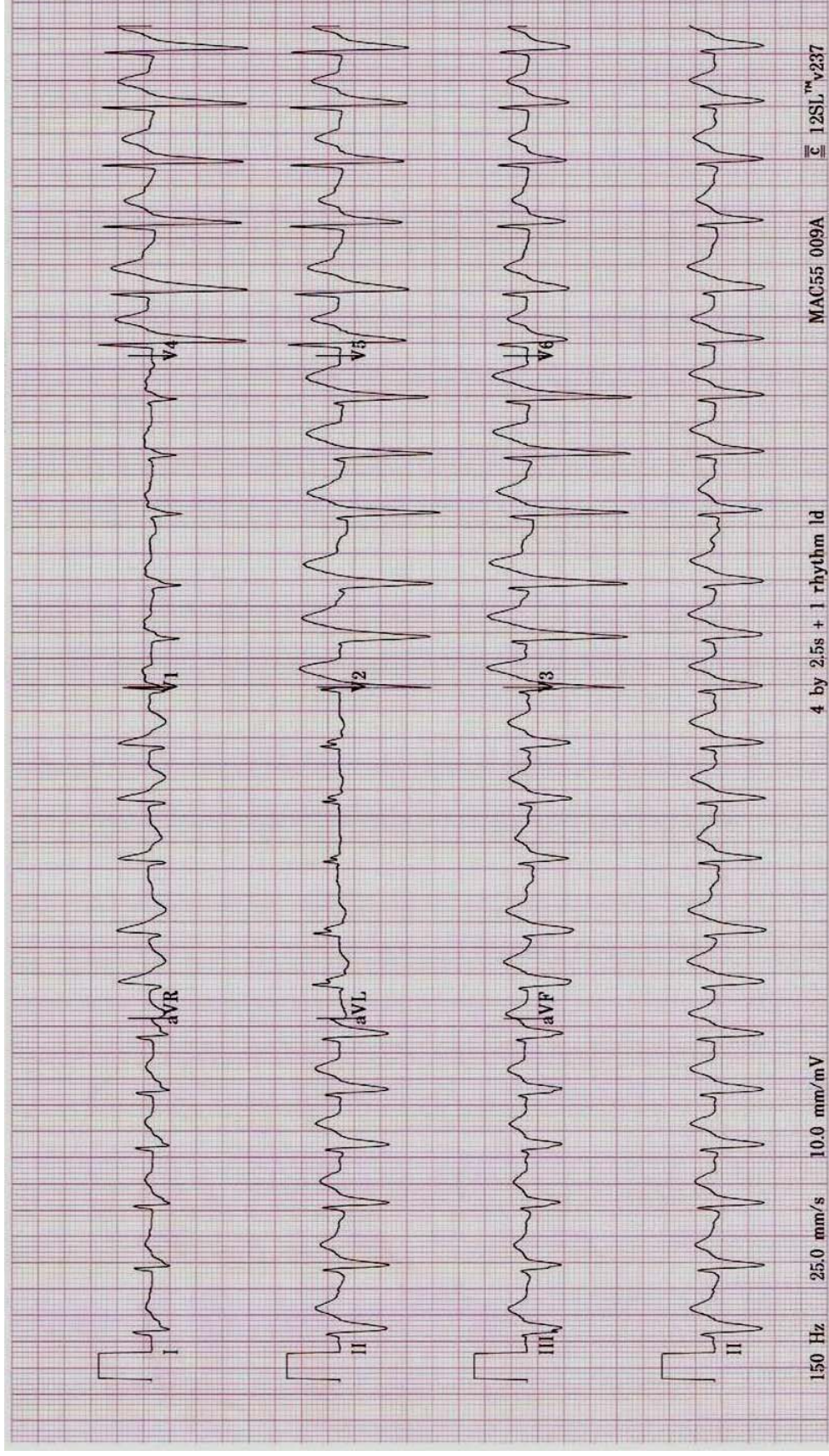
A 46 year old man is brought to your emergency department by ambulance following an overdose of unknown medications. He has had a brief generalized seizure en route.

On arrival his observations are:

GCS	12		
BP	85/60	mmHg	
Temperature	37.0	<sup>o</sup> C	
O <sub>2</sub> Saturation	100	%	on 8 L/min O <sub>2</sub>

- a. Describe and interpret his ECG (50%)
- b. Outline your treatment (50%)

# Question 7. ECG



**AUSTRALASIAN COLLEGE FOR EMERGENCY MEDICINE  
FELLOWSHIP EXAMINATION  
16 FEBRUARY 2011 - PART C**

**Question 8**

An 84 year old man is brought to your emergency department following a high speed car accident.

He has signs of multiple left rib fractures.

Two hours after arriving in the emergency department he becomes more breathless and distressed.

Arterial blood gases are performed

His observations are:

GCS	14	
HR	75	/min
BP	100/60	mmHg
RR	24	/min

Describe and interpret his results

(100%)

**AUSTRALASIAN COLLEGE FOR EMERGENCY MEDICINE  
FELLOWSHIP EXAMINATION  
16 FEBRUARY 2011 - PART C**

**Question 8.**

Arterial blood gases

			Reference Range
pH	7.14		(7.35-7.45)
pCO <sub>2</sub>	60	mmHg	(35-45)
pO <sub>2</sub>	114		
HCO <sub>3</sub> <sup>-</sup>	17	mmol/L	(21-28)
Lactate	1.4	mmol/L	(< 2.0)
FiO <sub>2</sub>	50	%	
Na <sup>+</sup>	139	mmol/L	(135-145)
K <sup>+</sup>	4.8	mmol/L	(3.2-4.3)
Cl <sup>-</sup>	116	mmol/L	(99-109)
Glucose	11.3	mmol/L	(3.0-6.0)