

**AUSTRALASIAN COLLEGE FOR EMERGENCY MEDICINE  
FELLOWSHIP EXAMINATION  
16 FEBRUARY 2011 - PART C**

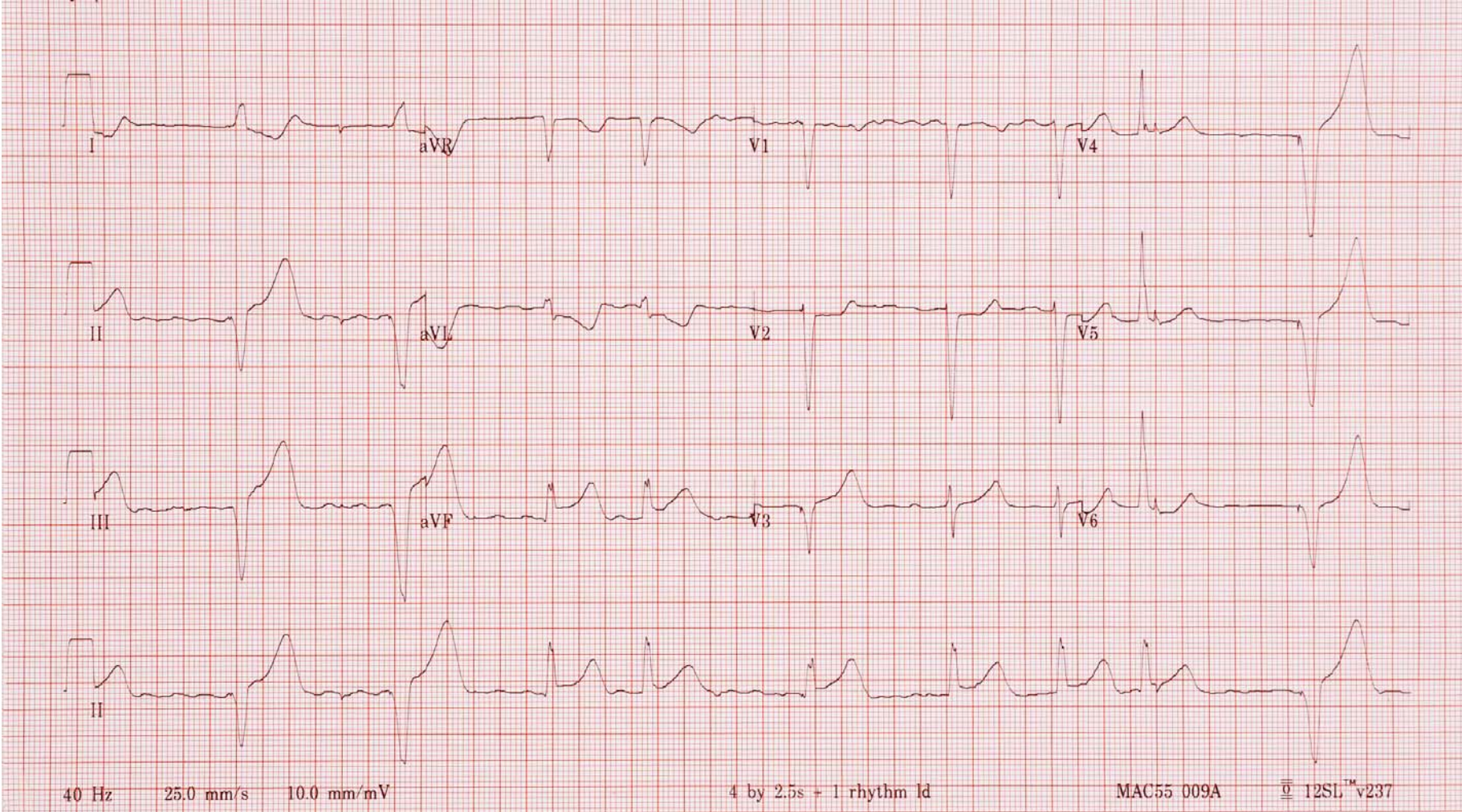
**Question 1**

A 64 year old man presents to your emergency department with chest pain and shortness of breath.

Describe and interpret his ECG

(100%)

# Question 1 ECG



**AUSTRALASIAN COLLEGE FOR EMERGENCY MEDICINE  
FELLOWSHIP EXAMINATION  
16 FEBRUARY 2011 - PART C**

**Question 2**

A 65 year old woman has been brought to your emergency department after being struck by a car at a pedestrian crossing. She has a painful right leg.

Her AP and Lateral X-rays are shown

- a. Describe and interpret her X-rays (50%)
- b. Outline potential complications (50%)

**AUSTRALASIAN COLLEGE FOR EMERGENCY MEDICINE  
FELLOWSHIP EXAMINATION  
16 FEBRUARY 2011 - PART C**

**Question 2. X-rays**

See over page for props

**X-ray 1 & X-ray 2  
On next page**

**Question 2 X-ray 1**



**Question 2 X-ray 2**



**AUSTRALASIAN COLLEGE FOR EMERGENCY MEDICINE  
FELLOWSHIP EXAMINATION  
16 FEBRUARY 2011 - PART C**

**Question 3**

An 87 year old man from a nursing home presents following a generalized seizure.

Serum biochemistry is performed.

His observations are:

GCS	12	(M 5, V 3, E 4)	
HR	100	/min	
BP	120/70	mmHg	
Temperature	36.8	<sup>0</sup> C	
O <sub>2</sub> Saturation	97	%	on room air

- a. Describe and interpret his results (70%)
- b. Outline your treatment priorities (30%)

**AUSTRALASIAN COLLEGE FOR EMERGENCY MEDICINE  
FELLOWSHIP EXAMINATION  
16 FEBRUARY 2011 - PART C**

**Question 3**

His serum biochemical results are as follows

			Reference Range
Na <sup>+</sup>	183	mmol/L	(135-145)
K <sup>+</sup>	4.9	mmol/L	(3.2-4.3)
Cl <sup>-</sup>	137	mmol/L	(99-109)
HCO <sub>3</sub> <sup>-</sup>	25	mmol/L	(21-28)
Urea	23.5	mmol/L	(2.7-8.0)
Creat	105	micromol/L	(50-100)
Glu	6.9	mmol/L	(3.0-6.0)
PO <sub>4</sub> <sup>-</sup>	2.41	mmol/L	(0.65-1.45)
Ca <sup>2+</sup>	2.39	mmol/L	(2.0-2.55)
Mg <sup>2+</sup>	1.12	mmol/L	(0.70-0.95)