



Fellowship Practice Exam

December 2015 - Booklet 2

**WRITTEN EXAMINATION
SHORT ANSWER QUESTIONS**

EXAMINATION TIME: 3 HOURS - 1 hour per booklet

Directions to Candidates

This booklet is two of three. It contains 9 questions. Allow 9 minutes for 3 page questions (1 and 9), and 6 minutes for 2 page questions (2 - 8). The entire booklet should take you 1 hour to complete.

1. Answer each question in the space provided in this question paper.
2. Do not write your name on this question paper.
3. Write your candidate number **on each page** in the space provided.
4. Cross out any errors completely.
5. Do not begin the exam until instructed to do so.
6. No examination papers or materials to leave the room.
7. Props are provided in a separate booklet.

Candidate number _____

Question 10 (33 marks) 9 minutes

A 2 year old is brought to your emergency department after a witnessed ingestion of two of his grandmother's slow release verapamil tablets 2 hours ago. He is alert with a HR of 110/min and appears well perfused.

- i. What is your risk assessment of this ingestion? Justify this assessment. (4 marks)

Risk Assessment (2 marks)	Justification (2 marks)

- ii. What is the role of decontamination for this ingestions? (2 marks)

- iii. What is the role of enhanced elimination for this ingestion? (2 marks)

Question 10 continued

2 hours after arrival the child deteriorates. His observations are as follows:

GCS	13	(E3, V5, M5)
HR	60	/min
BP	60/40	mmHg

iv. List four (4) key steps in your supportive care or specific treatment. Provide detail for each step. (8 marks)

	Supportive care / specific treatment (4 marks)	Detail (4 marks)
1		
2		
3		
4		

v. State your disposition and provide justification for your decision. (3 marks)

Question 10 continued

- vi. List four (4) other medications, with specific examples of potential toxic effects, that could result in severe morbidity or death in a toddler following ingestion of only 1-3 tablets (or a mouthful). (8 marks)

	Medication (4 marks)	Potential toxic effect (4 marks)
1		
2		
3		
4		

For an asymptomatic child with a witnessed ingestion of an unknown medication:

- vii. List three (3) key investigations. (3 marks)

1 _____

2 _____

3 _____

For an asymptomatic child with a witnessed ingestion of an unknown medication:

- viii. State and provide justification for your disposition (3 marks)

Candidate number _____

This page is intentionally blank

Question 11 (18 marks) 6 minutes

A 17 year old male presents after an episode of syncope while out running. He is currently asymptomatic.

On examination you hear a systolic murmur. His observations are as follows:

HR	60	/min
BP	130/80	mmHg
Temp	36.8	°C
GCS	15	

- i. Complete the following stating what happens to the systolic murmurs in the table with the described manoeuvres. (12 marks)

Manoeuvre	Lesion			
	Hypertrophic cardiomyopathy (3 marks)	Mitral valve prolapse (3 marks)	Aortic stenosis (3 marks)	Mitral regurgitation (3 marks)
Valsalva				
Squatting				
Hand grip				

- ii. You suspect Hypertrophic cardiomyopathy. List three (3) features that may be present on the ECG of a patient with Hypertrophic cardiomyopathy. (3 marks)

1 _____

2 _____

3 _____

Question 11 continued

iii. In a patient with confirmed Hypertrophic Cardiomyopathy, list three (3) specific treatments that may prevent sudden death? (3 marks)

1

2

3

Question 12 (21 marks) 6 minutes

An 18 month old child presents with a rash on her thumb that has been present for the last week and is not improving after a course of oral cephalixin from their local doctor. She has been systemically well and is afebrile at triage.

A clinical photograph has been taken and is shown on page 10 of the props booklet

i. Describe the clinical photograph giving four (4) relevant positive finding and 2 relevant negatives. (6 marks)

1 _____

2 _____

3 _____

4 _____

5 _____

6 _____

ii. What is the most likely diagnosis and organism responsible? (2 marks)

iii. List two (2) differential diagnoses. (2 marks)

1 _____

2 _____

Question 12 continued

iv. List three (3) possible complications of this condition. (3 marks)

1 _____

2 _____

3 _____

v. Prescribe two (2) appropriate medications in the chart below. (8 marks)

Date	Medication (Print Generic Name)	Tick if Slow Release
Route	Dose	Frequency

Date	Medication (Print Generic Name)	Tick if Slow Release
Route	Dose	Frequency

Question 13 (24 marks) 6 minutes

A 25 year old man presents to your NSW Emergency Department after a suspected funnel web spider bite approximately 30 minutes ago.

- i. Complete the following table regarding features of envenomation from funnel web spiders. (15 marks)

Class	Symptoms
General (2 marks)	1
	2
Autonomic (5 marks)	1
	2
	3
	4
	5
Neurological (4 marks)	1
	2
	3
	4
Cardiovascular (3 marks)	1
	2
	3
Respiratory (1 mark)	1

Question 13 continued

- ii. List and justify two (2) investigations warranted in severe cases of envenomation. (4 marks)

	Investigation (2 marks)	Justification (2 marks)
1		
2		

- iii. State five (5) steps to your management of a patient with a symptomatic funnel web spider bite. Provide doses/routes as indicated. (5 marks)

1

2

3

4

5

Question 14 (19 marks) 6 minutes

A 60 year old female presents with left sided chest pain and shortness of breath.

A CXR - (AP and lateral) is taken. They are shown on pages 11 and 12 of the props booklet.

i. List three (3) positive and two (2) negative findings on the CXR. (5 marks)

1 _____

2 _____

3 _____

4 _____

5 _____

ii. Give three (3) relevant details about the major abnormality. (3 marks)

1 _____

2 _____

3 _____

iii. List three (3) differential diagnoses. (3 marks)

1 _____

2 _____

3 _____

Question 14 continued

- iv. List and justify four (4) investigations you would perform on the day of her presentation. (8 marks)

	Investigation (4 marks)	Justification (4 marks)
1		
2		
3		
4		

Question 15 (17 marks) 6 minutes

You are the emergency consultant at a tertiary hospital. A 4 year old female presents with RLQ pain and a fever of 38 degrees.

- i. List the eight (8) parameters of the "Paediatric appendicitis score" (PAS). (8 marks)

1

2

3

4

5

6

7

8

- ii. Complete the following table regarding the utility of this scoring system. (6 marks)

Score (3 marks)	Management decision (3 marks)

Question 15 continued

iii. You decide your patient is fit for discharge. State three (3) instructions you would give the parents. (3 marks)

1

2

3

Question 16 (18 marks) 6 minutes

A 55 year old male presents with a painful left eye. You perform a slit lamp examination with fluorescein staining.

A clinical photograph is shown on page 13 of the props booklet.

i. Describe the corneal lesion, giving three (3) relevant features. (3 marks)

1 _____

2 _____

3 _____

ii. List three (3) differential diagnoses. (3 marks)

1 _____

2 _____

3 _____

Question 16 continued.

- iii. Give six (6) features of assessment relevant to this presentation. Give a justification for each. (12 marks)

	Assessment (6 marks)	Justification (6 marks)
1		
2		
3		
4		
5		
6		

Question 17 (16 marks) 6 minutes

An 80 year old lady presents after an episode of syncope. She is currently asymptomatic.

An ECG is taken and is shown on page 14 of the props booklet.

i. List the abnormalities shown on this ECG. (5 marks)

1 _____

2 _____

3 _____

4 _____

5 _____

ii. What is the most likely explanation for this patients' current episode of syncope? (2 marks)

Question 17 continued

iii. List five (5) possible causes for this current problem (5 marks)

1 _____

2 _____

3 _____

4 _____

5 _____

iv. State your disposition for this patient. (1 mark)

v. Justify your disposition for this patient. (3 marks)

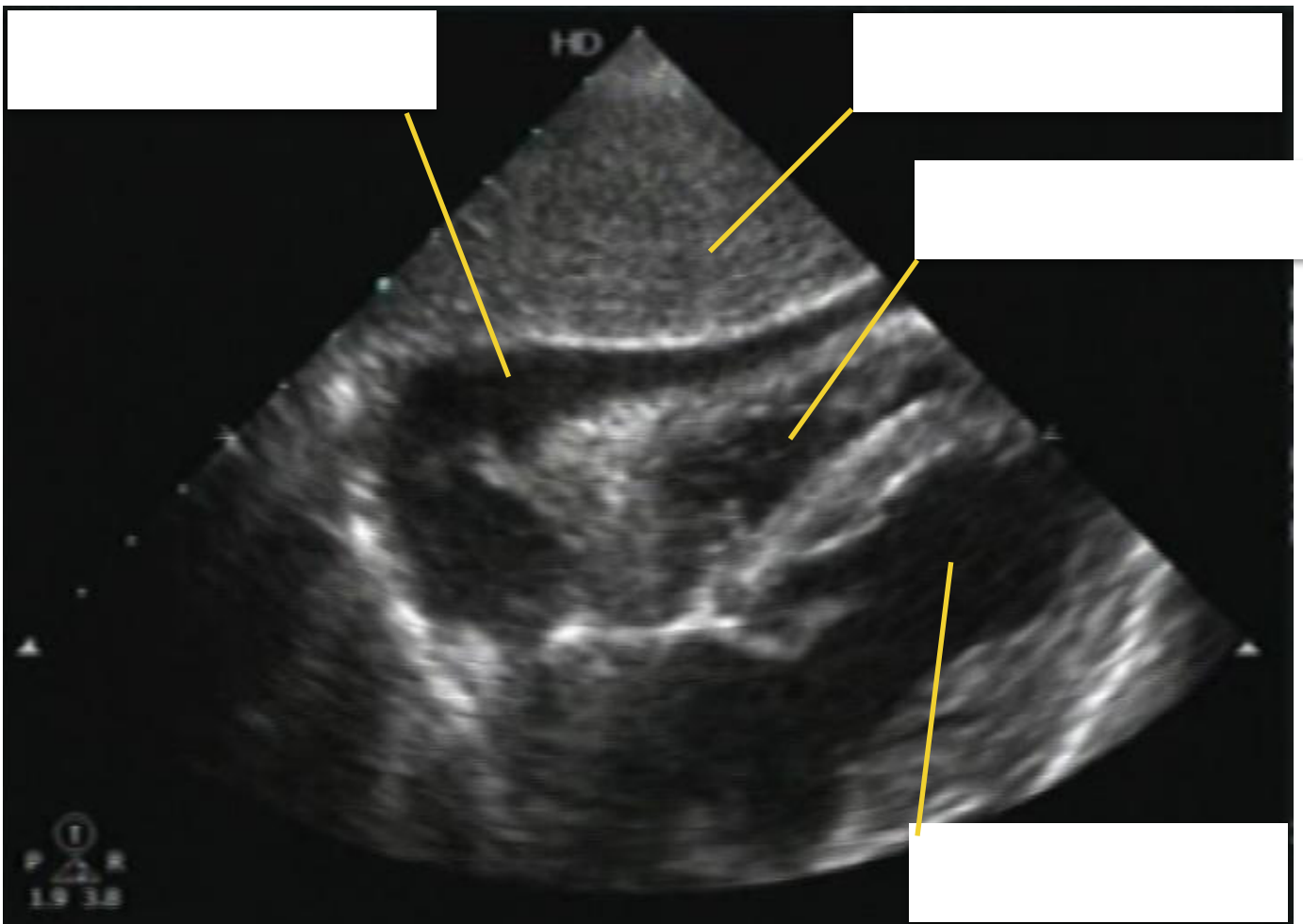
Question 18 (31 marks) 9 minutes

A 70 year old man present with shortness of breath and dizziness. He has a past medical history of ischaemic heart disease, AF, and high cholesterol. His medications are metoprolol, rivaroxiban and atorvastatin.

On examination his observations are as follows:

HR	100	/min AF
BP	90/50	mmHg
Temp	37.8	°C
Sats	96%	on 8L O ₂ via Hudson mask

- i. Label the subxiphoid ultrasound image below. (4 marks)



Question 18 continued

- ii. In the table below list 6 categories of differential diagnosis for the underlying cause and give 2 examples of each. (18 marks)

	Category (6 marks)	Examples (12 marks)
1		
2		
3		
4		
5		
6		

Question 18 continued

iii. What are the two (2) most likely causes in this gentleman? (2 marks)

1

2

iv. State the one (1) management step that is most likely to relieve his symptoms (1 mark)

v. State three (3) pros and three (3) cons for performing this management step for this patient in the emergency department as compared to on the ward (6 marks)

	Pros (3 marks)	Cons (3 marks)
1		
2		
3		