

Candidate number \_\_\_\_\_



# **Fellowship Practice Exam**

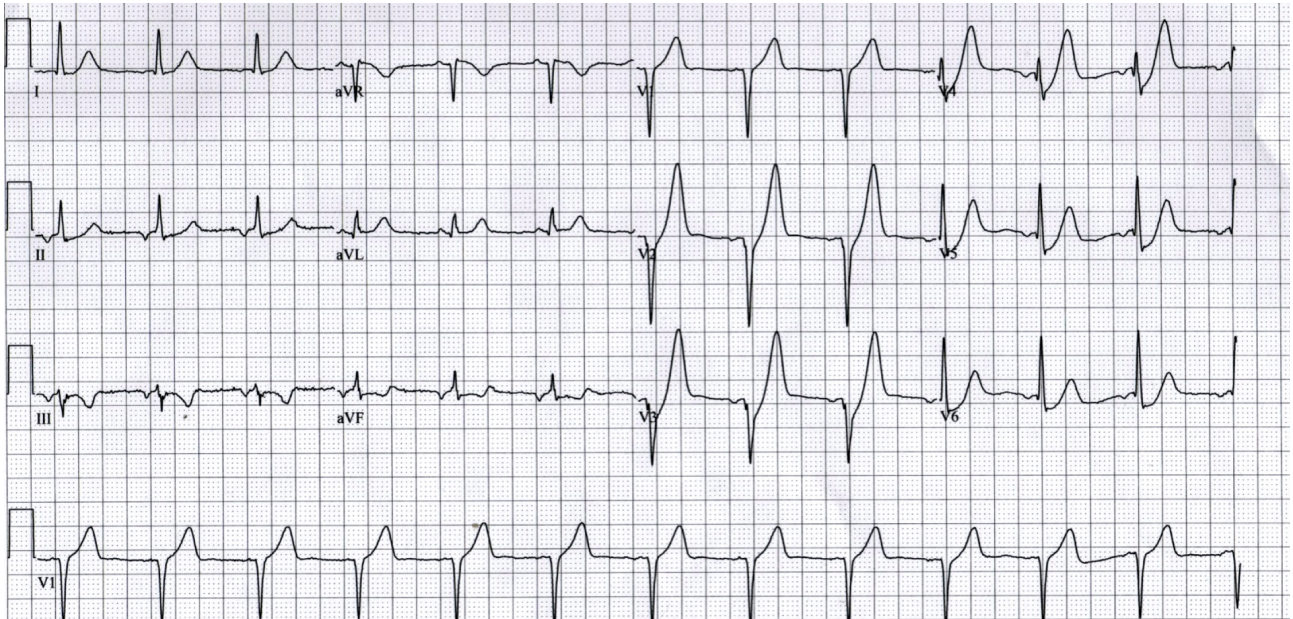
**November 2017**

**WRITTEN EXAMINATION  
SHORT ANSWER QUESTIONS**

## **Props Booklet**

Book 1			Book 2			Book 3		
Question	PROPS	Page	Question	PROPS	Page	Question	PROPS	Page
1	yes	3	10	yes	8	19	-	
2	yes	4	11	Yes	9	20	yes	12
3	yes	5	12	yes	10	21	-	
4	yes	6	13	yes	11	22	-	
5	-	-	14	-	-	23	-	
6	-	-	15	-	-	24	-	
7	-	-	16	-	-	25	-	
8	-	-	17	-	-	26	yes	13
9	yes	7	18	-	-	27	yes	14

# Question 1

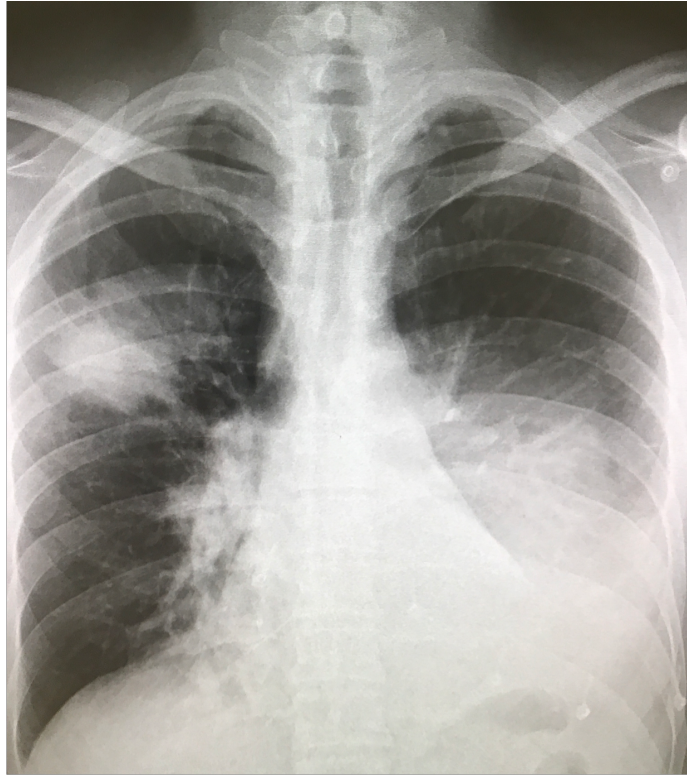
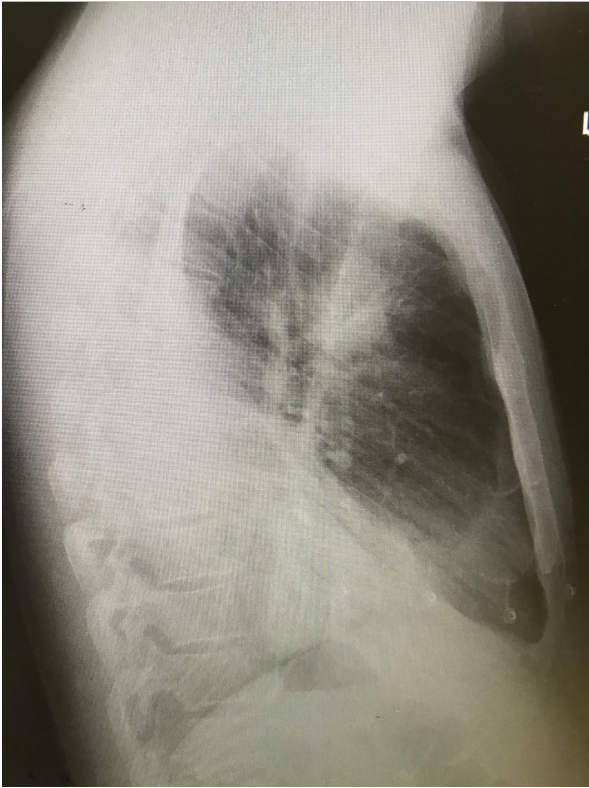


Question 2





Question 3



#### Question 4

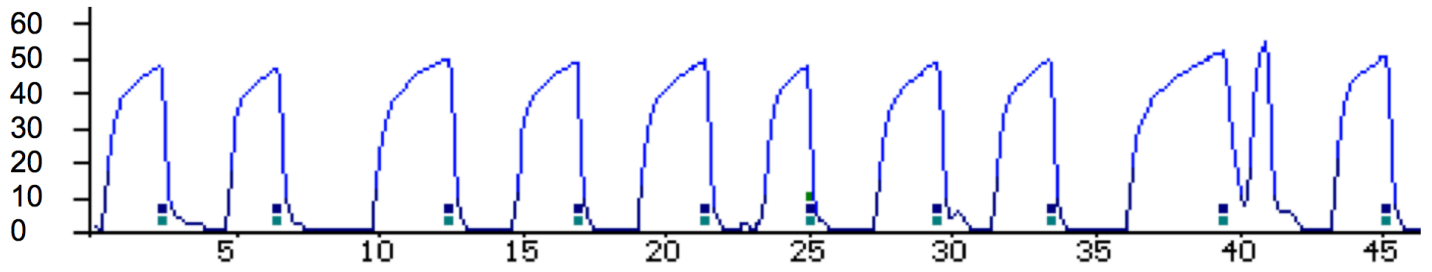
Venous blood gas

PH	7.41		( 7.32 - 7.42 )
PCO2	32	mmHg	( 41 - 51 )
HCO3	19	mmol/L	
Na	144	mmol/L	(135 - 145)
K	2.7	mmol/L	( 3 - 5 )
Cl	90	mmol/L	( 95 - 107 )
Glu	25	mmol/L	(3.0 - 10.0)
Lactate	1.8	mmol/L	( 0.5 - 2)

Question 9



Question 10

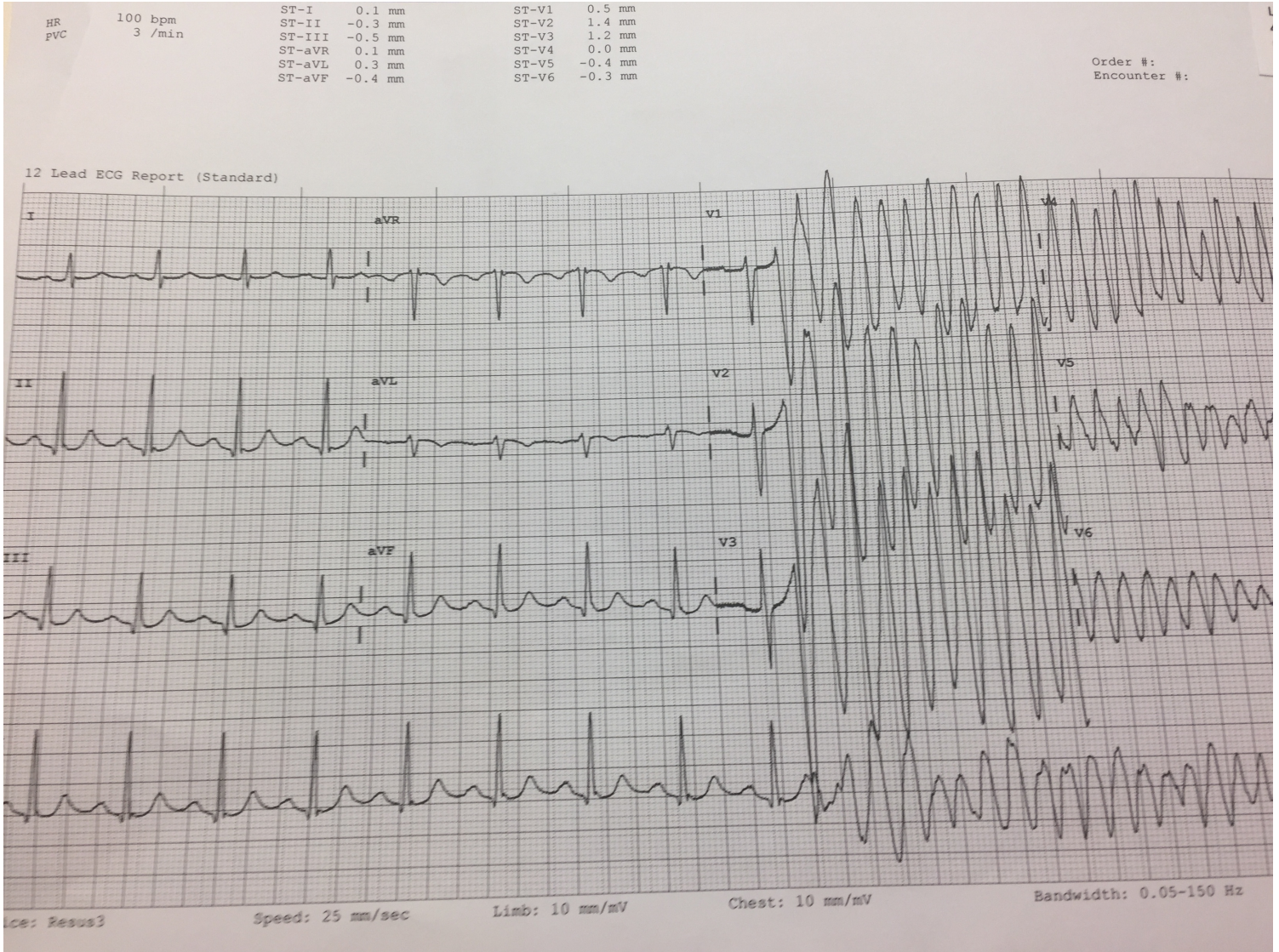


Question 11





# Question 12





Question 13



Question 20



**Question 26**

Venous blood gas

PH	7.18		( 7.32 - 7.42 )
PCO2	45	mmHg	( 41 - 51 )
PO2	90	mmHg	
COHb	18 %		
HCO3	12	mmol/L	(24 - 32)
Na	145	mmol/L	(135 - 145)
K	4.8	mmol/L	( 3 - 5 )
Cl	107	mmol/L	( 95 - 107 )
Glu	10.8	mmol/L	(3 - 10)
Lactate	16	mmol/L	( 0.5 - 2)

Question 27

