

AUSTRALASIAN COLLEGE FOR EMERGENCY MEDICINE
FELLOWSHIP EXAMINATION
17 FEBRUARY 2010 - PART C

Question 1

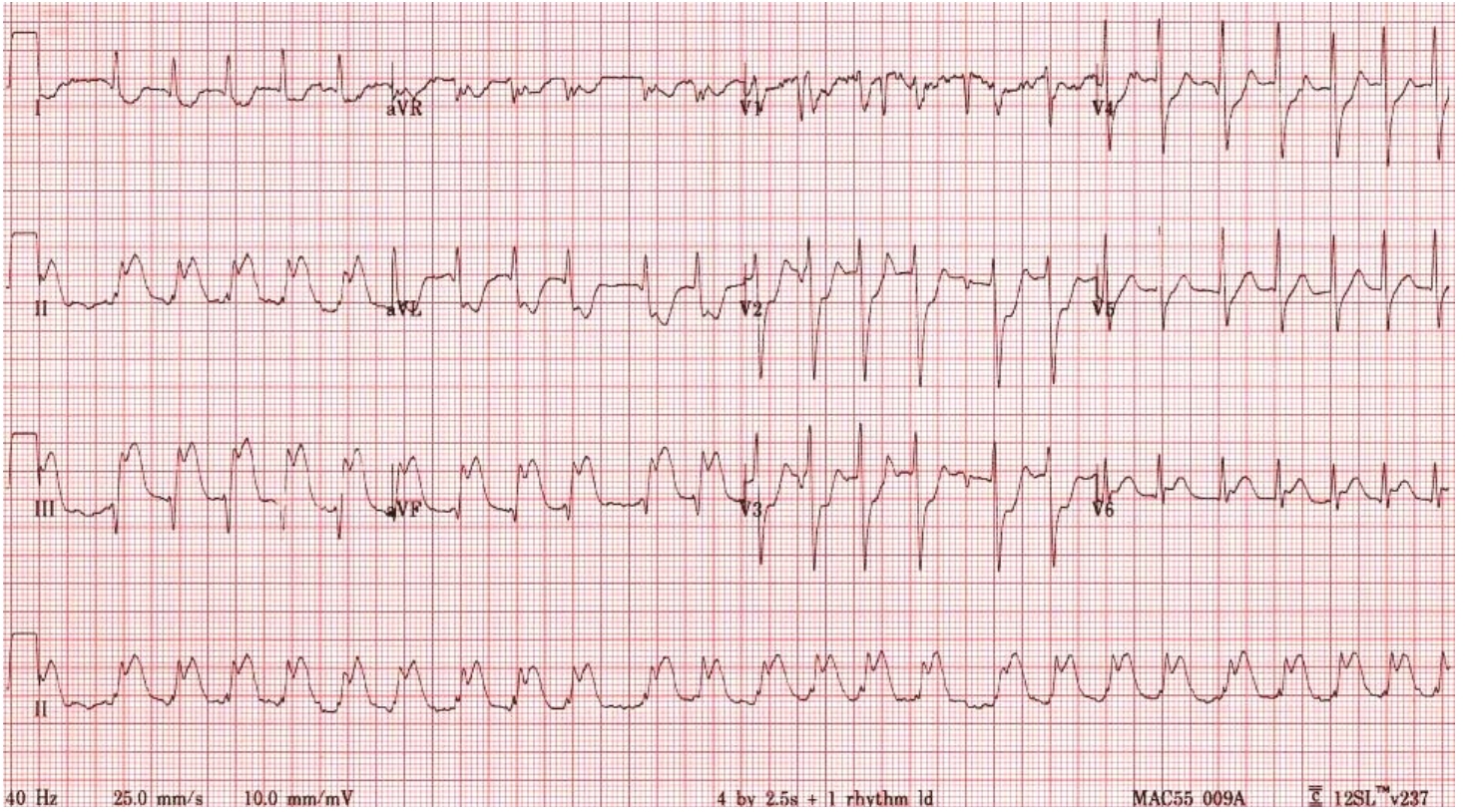
A 54 year old man with no prior medical history presents to your emergency department with one hour of chest pain. He is anxious and diaphoretic.

His observations are:

BP	100/60	mmHg	supine
RR	28	/min	
O ₂ saturation	99	%	on 10L/min O ₂ via Hudson mask

Describe and interpret his ECG (100%)

Question 1. ECG



AUSTRALASIAN COLLEGE FOR EMERGENCY MEDICINE
FELLOWSHIP EXAMINATION
17 FEBRUARY 2010 - PART C

A 25 year old man sustains a pelvic injury in a high speed motorcycle accident.

An X-ray including a retrograde cystogram is performed.

Describe and interpret his X-ray

(100%)

Question 2. X-ray



AUSTRALASIAN COLLEGE FOR EMERGENCY MEDICINE
FELLOWSHIP EXAMINATION
17 FEBRUARY 2010 - PART C

Question 3

A 45 year old man with type 1 diabetes mellitus is brought in by ambulance with an altered conscious state.

Describe and interpret his investigations

(100%)

AUSTRALASIAN COLLEGE FOR EMERGENCY MEDICINE

FELLOWSHIP EXAMINATION

17 FEBRUARY 2010 - PART C

Question 3

Serum biochemistry and arterial blood gas

			Reference Range
FIO ₂	0.50		
pH	7.05		7.35-7.45
pCO ₂	66	mmHg	35-45
pO ₂	247	mmHg	80-95
Bicarbonate	18	mmol/L	22-28
Base excess	-14		-3 - +3
O ₂ saturation	99	%	> 95
Na ⁺	131	mmol/L	134-146
K ⁺	5.0	mmol/L	3.4-5
Cl ⁻	92	mmol/L	98-106
Urea	15	mmol/L	3-8
Creatinine	227	micromol/L	45-90
Glucose	50.9	mmol/L	3.5-5.5