

**AUSTRALASIAN COLLEGE FOR EMERGENCY MEDICINE
FELLOWSHIP EXAMINATION
5 AUGUST 2009 - PART C**

Question 1

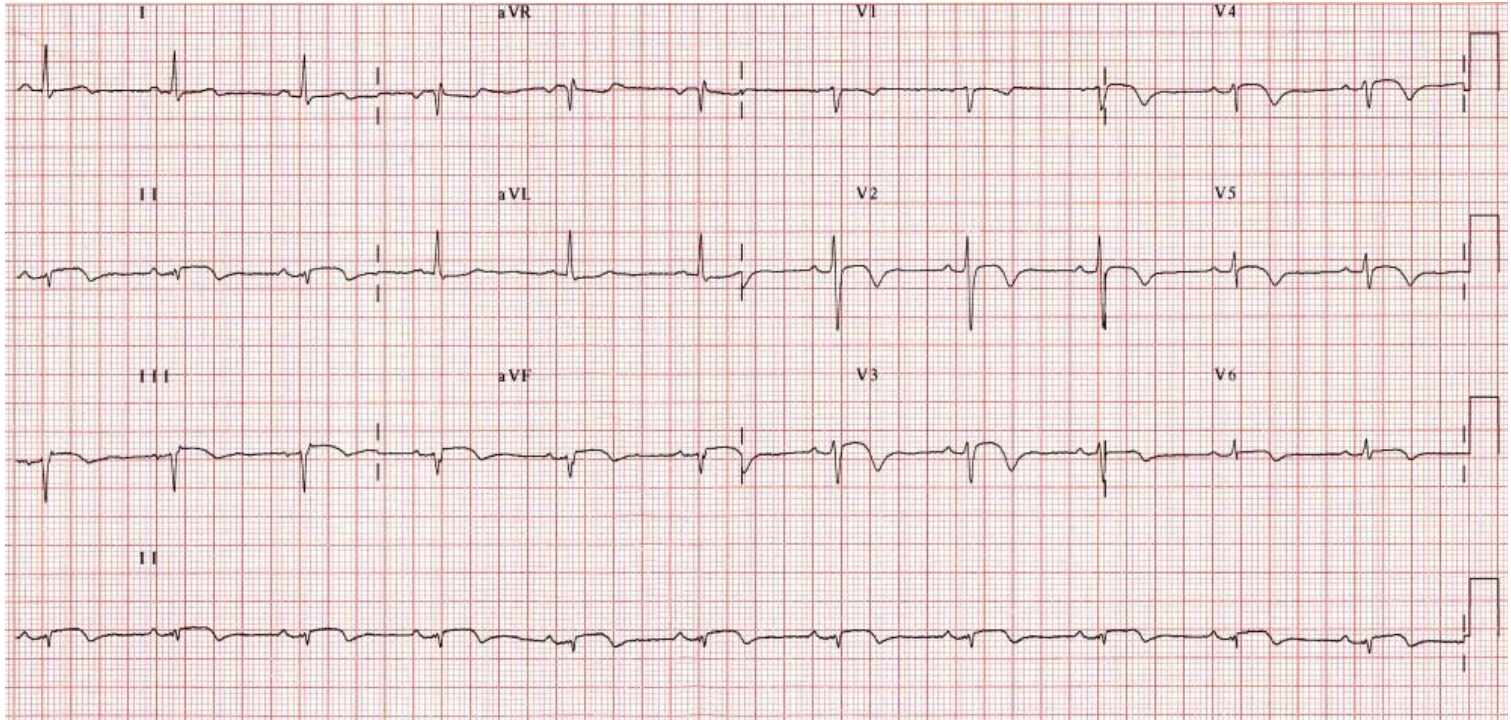
A 57 year old woman presents with an episode of 8 hours central chest pain which resolved spontaneously two hours ago. She has a past history of type 2 diabetes mellitus and is on no regular medication. Her vital signs are normal.

Describe and interpret her ECG

(100%)

**AUSTRALASIAN COLLEGE FOR EMERGENCY MEDICINE
FELLOWSHIP EXAMINATION
5 AUGUST 2009 - PART C**

Question 1 ECG



**AUSTRALASIAN COLLEGE FOR EMERGENCY MEDICINE
FELLOWSHIP EXAMINATION
5 AUGUST 2009 - PART C**

Question 2

A 35 year old homeless man presents with two months of increasing cough. He has no other medical past history.

Describe and interpret his chest X-ray

(100%)

**AUSTRALASIAN COLLEGE FOR EMERGENCY MEDICINE
FELLOWSHIP EXAMINATION
5 AUGUST 2009 - PART C**

Question 2 X-ray

